



www.tillers4africa.co.za

2-Wheel Tractor



MODEL (crank start) TM1515B

R 39 470 Incl. VAT

MODEL (electric start) TM1515BKS

R 43 050 Incl. VAT

Type	Single cylinder, Dual purpose (Traction and drive)
Overall dimensions :(LX w x H)	2120 x 840 x 1160 mm (minimum)
Tyre	Rubber Front Wheel :6.00-12
Wheel Track	Adjustable among 680-740mm
Clutch	Multiple Dry Plate. Friction Type
Ground clearance	Minimum 210 mm
Working Weight	250 Kg
Power Tiller Speed (km/h)	Forward: 1.68, 2.61, 4.22, 6.79, 10.57, 17.08 (6 Speed) Reverse: 1.29, 5.22 (2 Speed)

Engine Specification

Engine Model	195
Rated Engine Power & (hp)/KW	15/11.02Kw
Rated Engine Speed	2300 rpm/min
Gearbox	(3+1)*2 combined cylindrical gears transmission

Fuel Filter

Fuel Tank Capacity	Max 9 Liter
Chassis Engine Oil	2.9-3.5 Liter
Cooling System	Water cooled
Working width	width: 900 mm
Blade Number	18/20/22/24 blades
Starting System	Manual Cranking Type
Air Cleaner	Oil Bath Type
Packing	Weight (with paddy wheel):260-270 Kg Weight (with Rotary Tiller): 280 - 290 Kg Structure Weight:130 – 140 KG

Rotary Tiller with Seat

1GS-90



Specification

Overall Dimension (L*W*H)	970 x 970 x 750 (mm)
Power Pattern	Pull and drive
Structure Weight	57 kg
Working Breadth	90 mm
Tilling Depth	≥80 mm
Driving Mode	Gear/Chain drive
Turning Radius	195 mm
Quantity of Tilling Blade	18 pcs
Matched power	8-15HP

MODEL 1GS-90

R 10 050 Incl. VAT

Adjustable Flip Plough



R 3 880 Incl. VAT

Double Plough



R 5 599 Incl. VAT

Iron Wheel



R 4 090 Incl. VAT

Precision Dual Corn Seeder

2BSF - 1



Specification

Usage	Corn/Peanut/Soybean
Applications	Seeder/Fertilization
Matched power	5.88 - 16.2 / 8 - 22 Kw/HP
Size (L x W x H)	1250 x 250 x 650 mm
Weight	50 kg
No. Of rows	2
Row distance	250 - 650 mm
Sowing depth	150 mm
Production rate	2-5 Km ² /h

MODEL

2BSF - 1

R 14 350 Incl. VAT

Wheat Seeder



Specification

Usage	Seeding/Fertilization
Rows No.	3 - 8
Row width	150 - 200 mm
Seeding depth	20 - 105 mm
Wheel width	650 mm
Seeding tank capacity	40 Kg
Weight	62 Kg
Working efficiency	36-60 Acres/hr
Size	1500 x 980 x 680 mm
Output range	5 - 28 Kg
Matched power	8 - 22 HP

MODEL

Wheat Seeder

R 8 610 Incl. VAT

Potato Seeder

2CM - 1



Specification

Function	Potato planting/ fertilizing
Row number	1
Overall dimension	620*500*700 mm
Working depth	80 - 150 mm
Planting distance	120 mm
Weight	30 Kg
Productivity	0.1 - 0.2 ha/h
Matched power	8 - 22 HP

MODEL

2CM - 1

R 9 910 Incl. VAT

Peanut Seeder



Specification

Function	Peanut planting/ fertilizing
Seeding width	400 - 850 mm
Row number	2
Overall dimension	620 x 500 x 700 mm
Row distance	180 - 220 mm
Planting distance	150 - 350 mm
Seed Depth	20 - 100 mm
Productivity	0.5 - 0.9 ha/h
Matched power	8 - 22 HP

MODEL Peanut Seeder

R 8 330 Incl. VAT

Trencher / Ditcher



Specification

Applications	Trenching, fertilization, ditching
Weight	55 Kg
Ditch width	30 cm
Ditch depth	20 - 30 cm
Efficiency	1200 m / h
Transmission way	Gear transmission
Connection way	Gear connection
Matched power	8 - 15HP

MODEL Trencher/Ditcher

R 9 620 Incl. VAT

Lucerne / Wheat Harvester

4GL120



Specification

Cutting Width	1200 mm
Working Rate	0.66-0.99 Acres/hr
Min Cutting Height	≤50 mm
Placing Type	Side wise & Banded Placed
Lose Rate	<0.4%
Weight	70 - 80 Kg
Matched power	8-22HP

MODEL

4GL120

R 22 980 Incl. VAT

Potato Harvester



Specification

Number of rows	Single row
Productivity	3 - 5 mu/hr
G.W.	125 Kg
Working depth	200 mm
Working width	600 - 800 mm
Broken rate	≤ 2%
Clear Rate	≥ 96%
Power output speed	R/min 1000
Dimension	1000 x 1100 x 600 mm
Matched power	≥10HP

MODEL

Potato Harvester

R 21 530 Incl. VAT

Peanut Harvester



Specification

Operating Width	600 mm
Operating Efficiency	0.13-0.2 Ha/h
Dimension (LxWxH)	0.8 x 0.7 x 0.75 mm
Weight	65 Kg
Matched power	8 - 15 HP (101B-3)

MODEL Peanut Harvester

R 25 840 Incl. VAT

Ride on Trailer - Imported



Specification

Matched power	8-22HP Walking Tractor
Inside Dimension(L*W)	1800 x 900mm(1 ton) ;2000x1000mm (1.5 tons)
Load Capacity	1/1.5 T
Machine Weight	160 - 170 Kg
Linkage	Traction

MODEL Ride on trailer

R 17 230 Incl. VAT

Ride on seat



MODEL Ride on seat

R 5 310 Incl. VAT

Water Pump



Centrifugal Pump

型号/Model	1	吸程/Suction (m)	8-10
扬程/Lift (m)	60	转速/Speed (r/min)	1800
流量/Flowrate (m ³ /h)	60	功率/Power (kw)	6

Specification

Size	3 Inch
Inlet/Outlet	3 Inch
Flow rate	60 M ³ /h
Suction	8 - 10 M
Lift	60 M
Power	5.5 kW

MODEL Water Pump

R 5 740 Incl. VAT

Grass Cutter



Specification

Operating Width	≥800 mm
Operating Speed	2 - 4 Km/h
Cutting Height	≥50 mm
Operating Efficiency	≥0.15 Ha/h
Blade Rotary Speed	1800-2400 R/min
Dimension(LxWxH)	810 x 930 x 520 mm
Weight	27 Kg
Matched power	8--22HP

MODEL Grass Cutter

R 8 040 Incl. VAT



www.tillers4africa.co.za

All prices are only whilst stocks last

TM800A SMALL MODEL



Specification

Engine model	170F Petrol Engine
Engine Type	Single Cylinder, 4-Stroke, Air-Cooled, OHV
Max.Power	6.1hp (4.5)kw
Tilling Depth	100mm-300mm
Tilling width	700mm-900mm
Fuel Tank Capacity	3.6L
Transmission	Belt Driving
Gear Shifting	0,1,2,-1
Starting	Recoil Start
Displacement	210cc

Standard

170F 7.0HP Petrol Engine, Dry Land Blade (3 Pieces,4 Groups),350-6 Wheels,Recoil Start

Optional

Torque tube handle, Plastic Cover, Round Disc(Φ23)

MODEL: TM800A SMALL MODEL

R 12 480 Incl. VAT

TM951A MEDIUM MODEL



Specification

Engine model	170F Petrol Engine
Engine Type	Single Cylinder, 4-Stroke, Air-Cooled, OHV
Max.Power	7.0hp(5.1kw)/3600rpm
Tilling Depth	150mm-300mm
Tilling width	800mm-950mm
Fuel Tank Capacity	3.6L
Transmission	Gear Driving
Gear Shifting	0,1,2,-1
Starting	Recoil Start
Displacement	210cc

Standard

170F 7.0HP Petrol Engine, Dry Land Blade (3 Pieces,4 Groups),400-8 Wheels,Recoil Start

Optional

Torque tube handle, Plastic Cover, Round Disc (Φ23)

MODEL: TM951A MEDIUM MODEL

R 16 230 Incl. VAT

TM951B MEDIUM MODEL



Specification

Engine model	170F Petrol Engine
Engine Type	Single Cylinder, 4-Stroke, Air-Cooled, OHV
Max.Power	7.0hp(5.1kw)/3600rpm
Tilling Depth	150mm-300mm
Tilling width	800mm-950mm
Fuel Tank Capacity	3.6L
Transmission	Gear Driving
Gear Shifting	0,1,2,-1
Starting	Recoil Start
Displacement	210cc

Standard

170F 7.0HP Petrol Engine, Dry Land Blade (3 Pieces,4 Groups), 400-8 Wheels, Recoil Start

Optional

Torque tube handle, Plastic Cover, Round Disc (Φ23)

MODEL: TM951B MEDIUM MODEL

R 18 720 Incl. VAT

T4A800 Tiller + Scythe Mower



Specification

Engine Type	"Single Cylinder, 4-Stroke, Air-Cooled, OHV"
Max.Power	6.5HP 4.8kw
Tilling Depth	150mm-300mm
Tilling width/Cutting width	800mm
Fuel Tank Capacity	3.6L
Mower width	800mm
Gear Shifting	0,1,-1
Starting	Recoil
Displacement	196cc

MODEL: T4A800 Tiller + Scythe Mower

R 22 500 Incl. VAT

TM1051A BIG MODEL



Specification

Engine model	177F Petrol Engine
Engine Type	Single Cylinder,4-Stroke
Max.Power	9.0hp(6.2kw)/3600rpm
Tilling Depth	150mm-300mm
Tilling width	1050mm-1350mm
Fuel Tank Capacity	3.5L
Transmission	Gear Driving
Gear Shifting	0,1,2,-1
Starting	Recoil Start/Key start
Displacement	305cc

Standard

177F 9HP Petrol Engine, Dry Land Blade (4 Pieces,4 Groups),400-10 Wheels,Recoil Start

Optional

Key Start with 17AH Battery, Plastic Cover with light Ditcher,Round Disc (Φ 32), New bumper

MODEL: TM1051A BIG MODEL

R 19 999 Incl. VAT

TM1051B BIG MODEL



Specification

Engine model	178F Diesel Engine
Engine Type	Single Cylinder,4-Stroke, Air-Cooled,Direct Injection
Max.Power	6.0hp(5.2kw)/3600rpm
Tilling Depth	150mm-300mm
Tilling width	1050mm-1350mm
Fuel Tank Capacity	3.5L
Transmission	Gear Driving
Gear Shifting	0,1,2,-1
Starting	Recoil Start/Key start
Displacement	305cc

Standard

178F 6HP Diesel Engine, Dry Land Blade (4 Pieces,4 Groups),400-10 Wheels,Recoil Start

Optional

Key Start with 17AH Battery, Plastic Cover with light Ditcher, Round Disc (Φ 32), New bumper

MODEL: TM1051B BIG MODEL

R 22 460 Incl. VAT

TM1351B BIG MODEL



Specification

Engine model	188F Diesel Engine
Engine Type	Single Cylinder, 4-Stroke, Air-Cooled, Direct Injection
Max.Power	12.0hp(8.82kw)/3600rpm
Tilling Depth	180mm-300mm
Tilling width	1050mm-1350mm
Fuel Tank Capacity	5.5L
Transmission	Gear Driving
Gear Shifting	-1,2,0,1
Starting	Recoil Start
Displacement	426cc

Standard

Old Handle,AMM188F 12HP Diesel Engine,Dry Land Blade (4 Pieces,4 Groups),400-10 Wheels,Recoil Start

Optional

Key Start with 36AH Battery , Plastic Cover with light Ditcher,Round Disc (Φ 32),New bumper

MODEL: TM1351B BIG MODEL

R 26 200 Incl. VAT

TM1351B KS BIG MODEL



Specification

Engine model	188F Diesel Engine
Engine Type	Single Cylinder, 4-Stroke, Air-Cooled, Direct Injection Type
Max.Power	12.0hp(8.82kw)/3600rpm
Tilling Depth	180mm-300mm
Tilling width	1050mm-1350mm
Fuel Tank Capacity	5.5L
Transmission	Gear Driving
Gear Shifting	-1,2,0,1
Starting	Electric Key start
Displacement	426cc

Standard

Old Handle, AMM188F 12HP Diesel Engine, Dry Land Blade (4 Pieces, 4 Groups), 400-10 Wheels, Key Start with 36AH Battery

Optional

Plastic Cover with light Ditcher, Round Disc (Φ32), New bumper

MODEL: TM1351B KS BIG MODEL

R 29 950 Incl. VAT

Deep Hoe MODEL



Specification

Description	For hard land ,dry land
Tilling Depth	180mm-380mm
Tilling width	700mm-1000mm

MODEL:

Deep Hoe

R 2 370 Incl. VAT

Simple Plough



MODEL: Simple Plough

R 999 Incl. VAT

Adjustable Plough



MODEL: Adjustable Plough

R 2 370 Incl. VAT

Potato Harvester



MODEL: Potato Harvester

R 999 Incl. VAT

Grass Cutter attachment



Description

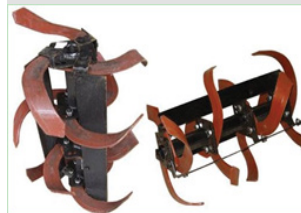
Grass Cutter attachment: only fits TM1050/TM1350B

MODEL: Grass Cutter attachment

R 6 870 Incl. VAT

Price does not include machine

Antiwind Blade



Description

Pulls out grass with roots

MODEL: Antiwind Blade

R 2 370 Incl. VAT

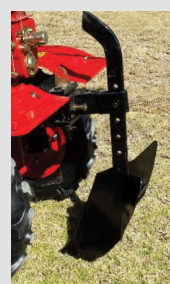
Adjustable Ditcher



MODEL: Adjustable Ditcher

R 1 250 Incl. VAT

Ditcher



MODEL:

Ditcher

R 999 Incl. VAT

End Disc for blades



MODEL: **End Disc for blades**

R 999 Incl. VAT

Ridger



MODEL: **Ridger**

R 3 750 Incl. VAT

Iron Wheels (set)



MODEL: **Iron Wheels (set)**

R 2 370 Incl. VAT

Water Pump 2 inch



Description

Attaches to PTO on rear of tiller to pump water

MODEL: **Water Pump 2 Inch**

R 1 250 Incl. VAT

Water Pump 3 inch



Only for 1050/1350 attach to PTO

Specification

2500-4500 rpm,
30m max lift,
7m suction lift,
35m³/h max flow

Plastic housing

MODEL: **Water Pump 3 inch**

R 1 499 Incl. VAT

1 Row Precision seed Planter



Specification

Distance	Adjustable (20cm, 34cm, 40cm)
Function	Plant, fertilization
Seed Capacity	2 - 3 Kg
Fertilising Capacity	5 - 6 Kg

MODEL: **1 Row Precision seed Planter**

R 4 999 Incl. VAT

3 Row Seed Planter



Specification

Distance	Adjustable
Plants	Wheat, corn(maize). soybean, peanut & cotton

MODEL: **3 Row seed Planter**

R 4 370 Incl. VAT

All prices are only whilst stocks last

TM450A Trencher



Specification

Engine model	170F Petrol Engine
Engine Type	Single Cylinder,4-Stroke, Air-Cooled,
Max.Power	7.0hp(5.1kw)/3600rpm
Trenching Width	100mm
Trenching Depth	50mm - 450mm
Trenching Speed	Up to 60m per hour
Fuel Tank Capacity	3.5L
Starting	Recoil

Shipping Dimensions

1PC/CTN
1060 x 740 x 850mm
Plywood packing
160/145kg

MODEL: **TM450A Trencher**

R 36 800 Incl. VAT

TM600A Trencher



Specification

Engine model	190F Petrol Engine
Engine Type	Single Cylinder, 4-Stroke, Air-Cooled,
Max.Power	15hp(11.1kw)/3600rpm
Trenching Width	100mm
Trenching Depth	150mm - 600mm
Trenching Speed	Up to 60m per hour
Fuel Tank Capacity	3.5L
Starting	Recoil

Shipping Dimensions

1PC/CTN
1060 x 740 x 850mm
Plywood packing
160/145kg

MODEL: **TM600A Trencher**

R 47 455 Incl. VAT

T4A01 Corn/soybean/sunflower Harvester



Specification

Model	WFRJ-E40F-5D
Power	2.2HP(1.45kw)
Engine Type	Gasoline
Starting model	Hand line
Displacement	42.7CC
Rated Power	1.25/6500 (kw/r/min)
Max Power	0.6L/H
Lubricating oil	Four stroke engine oil
Oil tank	1.1(L)
Capacity	0.2 - 0.25 acre /H
Wheel	Solid rubber wheel
Wheel Diameter	200mm
Weight	20KG
Size	1272 x 388 x 1257 mm

MODEL: **T4A01 Harvester**

R 7 499 Incl. VAT

T4A04 Wood Chipper



Specification

Blades	2 pcs
Blade length:	300mm
	Twin reversible blades
Drive Belts	2 pcs
Clutch	Advanced Centrifugal
Chip capacity	120mm
Emergency stop	on feeding chute
Gas engine power	15hp(11.1kw)/3600rpm
CE certificate	

Shipping Dimensions

1PC/CTN
890 x 755 x 1230mm
Plywood packing
185/165kg

MODEL: **T4A04 Wood Chipper**

R 34 999 Incl. VAT

T4A65 wood chipper



Specification

Blades	2 pcs
Blade length:	150mm
	Twin reversible blades
Drive Belts	2 pcs
Clutch	Centrifugal
Emergency stop	
Gas engine power	6,5hp(5.1kw)/3600rpm

Shipping Dimensions

1PC/CTN
555 x 850 x 870mm
Plywood packing
100/85kg

MODEL: **T4A65 Wood Chipper**

R 21 250 Incl. VAT

T4A65e wood chipper



Specification

230V 3kw electric motor	
Single phase	
Blades	2 pcs
Drive Belts	2 pcs
Blade length:	150mm
Chip capacity:	80mm
Emergency stop	Yes
Electric motor	3kw

Shipping Dimensions

1PC/CTN
555 x 850 x 870mm
Plywood packing
100/85kg

MODEL: **T4A65e wood chipper**

R 21 220 Incl. VAT

T4A-4SMW



Specification

Engine	4 stroke 139F
Displacement	31cc
Output Power	0.8kw /7000rpm
Starting system	recoil
Lubricating Oil	
Gross weight	16kgs

Shipping Dimensions

2PC/CTN
330 x 370 x 430mm
Control lever
1520 x 110 x 130mm

MODEL: **T4A-4SMW**

R 4 600 Incl. VAT

Add Gearbox

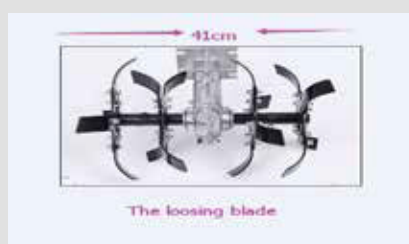
R 1 130 Incl. VAT

Add Weeder Blades



R 750 Incl. VAT

Add Tiller Blades



R 750 Incl. VAT

Add Sawcut Blade



R 750 Incl. VAT

Vegetables Seeders

TM-S01-1

www.tillers4africa.co.za
Email: sales@tillers4africa.co.za



Applicable to: Many different vegetables

L120 x W14 x H89cm	Seeder Size	L120 x W31 x H89cm
91 x 15 x 34cm	Carton Size	91 x 32 x 32cm

MODEL: T4A01 Harvester

R 4 990 Incl. VAT

TM-S01-2

www.tillers4africa.co.za
Email: sales@tillers4africa.co.za



MODEL: T4A01 Harvester

R 6 240 Incl. VAT

Seed Spacing Benchmark Sheet (cm)

Teeth Qty of sowing gear	14	14	13	13	11	11	11	11	10	10	9	
Teeth Qty of driving gear	9	10	10	11	11	11	11	13	13	14	14	
	3	51	46	43	39	36	33	30	28	25	23	21
	4	38	35	32	29	27	25	23	21	19	18	16
	6	26	23	21	19	18	16	15	14	13	12	11
Hole Qty of sowing roller	8	19	17	16	15	14	13	12	11	10	9	8
	10	15	14	13	12	11	10	9	8	8	7	6
	12	13	12	11	10	9	8	7	7	6	6	5

TM-S01-3

www.tillers4africa.co.za
Email: sales@tillers4africa.co.za



Applicable to: Many different vegetables

L120 x W43 x H89cm	Seeder Size	L120 x W55 x H89cm
91 x 44 x 32cm	Carton Size	91 x 57 x 32cm

MODEL: TM-S01-3

R 7 490 Incl. VAT

TM-S01-4

www.tillers4africa.co.za
Email: sales@tillers4africa.co.za



MODEL: TM-S01-4

R 9 985 Incl. VAT

Seed Spacing Benchmark Sheet (cm)

Teeth Qty of sowing gear	14	14	13	13	11	11	11	11	10	10	9	
Teeth Qty of driving gear	9	10	10	11	11	11	11	13	13	14	14	
	3	51	46	43	39	36	33	30	28	25	23	21
	4	38	35	32	29	27	25	23	21	19	18	16
	6	26	23	21	19	18	16	15	14	13	12	11
Hole Qty of sowing roller	8	19	17	16	15	14	13	12	11	10	9	8
	10	15	14	13	12	11	10	9	8	8	7	6
	12	13	12	11	10	9	8	7	7	6	6	5

TM-S01-6



Applicable to: Many different vegetables

L120 x W78 x H89cm	Seeder Size	L91 x W12 x H57cm
91 x 82 x 32cm	Carton Size	92 x 14 x 58cm

Model: **TM-S01-6**

R 13 730 Incl. VAT

TM-S04-1

For towing behind tiller or tractor, can link multiple



MODEL: **TM-S04-1**

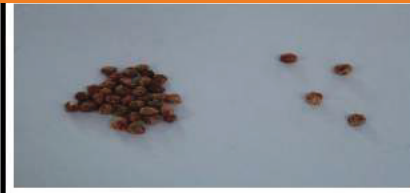
R 7 490 Incl. VAT

Seed Spacing Benchmark Sheet (cm)

Teeth Qty of sowing gear	14	14	13	13	11	11	11	11	10	10	9
Teeth Qty of driving gear	9	10	10	11	11	11	11	13	13	14	14
3	51	46	43	39	36	33	30	28	25	23	21
4	38	35	32	29	27	25	23	21	19	18	16
6	26	23	21	19	18	16	15	14	13	12	11
Hole Qty of sowing roller	8	19	17	16	15	14	13	12	11	10	9
10	15	14	13	12	11	10	9	8	8	7	6
12	13	12	11	10	9	8	7	7	6	6	5

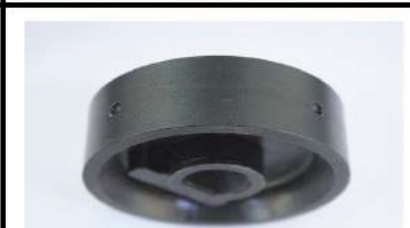
Price for each roller

R 160 Incl. VAT



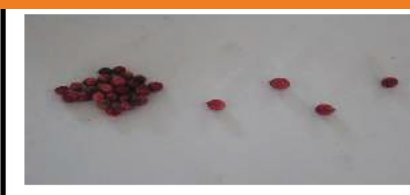
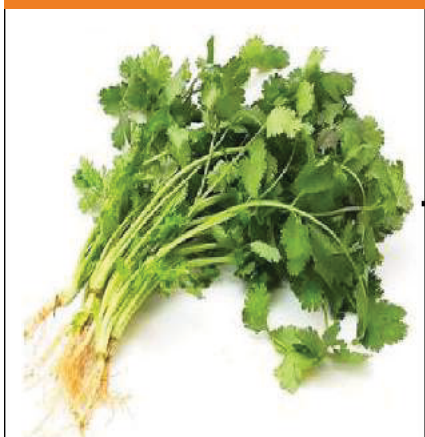
Spinach

Plant Spacing	5 - 8cm
Row Spacing	20 cm
QTY/hole	2 - 3
Hole diam Ø	6.5 & 12 Holes



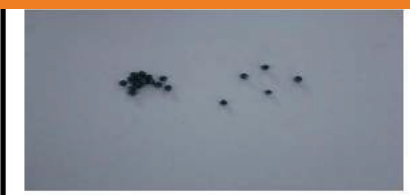
Rape

Plant Spacing	5 cm
Row Spacing	10-15cm
QTY/hole	2 - 3
Hole diam Ø	3.5 & 12 Holes



Chinese Parsley

Plant Spacing	2 - 3cm
Row Spacing	10 - 15 cm
QTY/hole	2 - 3
Hole diam Ø	6.5 & 30 Holes



Chinese Cabbage

Plant Spacing	35 - 45 cm
Row Spacing	40 - 55 cm
QTY/hole	3 - 5
Hole diam Ø	4.5 & 3 Holes

Price for each roller

R 160 Incl. VAT



Celery

Plant Spacing	8 - 10cm
Row Spacing	10 -12 cm
QTY/hole	2 - 3
Hole diam Ø	2.5 & 8 Holes



Fennel/Dill

Plant Spacing	5 cm
Row Spacing	15cm
QTY/hole	3 - 5
Hole diam Ø	7 & 10 Holes



Leeks

Plant Spacing	1 - 2 cm
Row Spacing	10 cm
QTY/hole	2 - 3
Hole diam Ø	6.5 & 30 Holes



Cabbage/Kale

Plant Spacing	25 - 30 cm
Row Spacing	45 cm
QTY/hole	2 -3
Hole diam Ø	4 & 4 Holes

Price for each roller

R 160 Incl. VAT



Baby Cabbage

Plant Spacing	20 cm
Row Spacing	40 - 50 cm
QTY/hole	2
Hole diam Ø	4 & 6 Holes



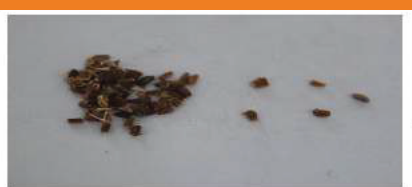
Flowering Cabbage

Plant Spacing	10 cm
Row Spacing	25 - 30 cm
QTY/hole	2 - 3
Hole diam Ø	3.5 & 10 Holes



Water Spinach

Plant Spacing	15 - 20 cm
Row Spacing	25 - 30 cm
QTY/hole	2
Hole diam Ø	9.5 & 12 Holes

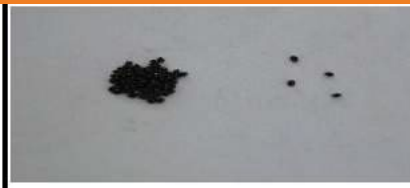


Crown Daisy

Plant Spacing	3 - 5 cm
Row Spacing	25 - 30 cm
QTY/hole	2 - 3
Hole diam Ø	5.5 & 20 Holes

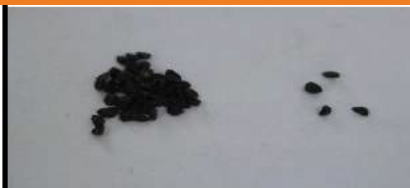
Price for each roller

R 160 Incl. VAT



Amaranth

Plant Spacing	15 - 25 cm
Row Spacing	20 - 25 cm
QTY/hole	2 - 3
Hole diam Ø	2.5 & 6 Holes



Onion

Plant Spacing	20 - 35 cm
Row Spacing	35 - 45cm
QTY/hole	2 - 3
Hole diam Ø	3.5 & 4 Holes



Green Onion

Plant Spacing	3 - 5 cm
Row Spacing	80 cm
QTY/hole	2 - 3
Hole diam Ø	4.5 & 20 Holes



Kidney Bean

Plant Spacing	10 - 15 cm
Row Spacing	30 - 45 cm
QTY/hole	2 - 3
Hole diam Ø	13.5 & 8 Holes

Price for each roller

R 160 Incl. VAT



Green Radish

Plant Spacing	15 - 20cm
Row Spacing	25 cm
QTY/hole	2
Hole diam Ø	5.5 & 6 Holes



Carrot

Plant Spacing	8 - 12 cm
Row Spacing	20 cm
QTY/hole	2 - 3
Hole diam Ø	4.5 & 12 Holes



Summer Radish

Plant Spacing	10 cm
Row Spacing	15 cm
QTY/hole	1 - 2
Hole diam Ø	4.5 & 8 Holes

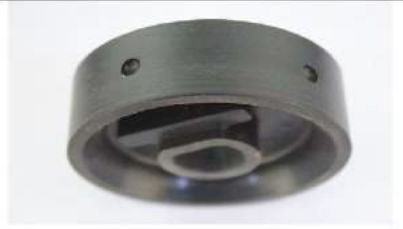


Cherry Radish

Plant Spacing	8 cm
Row Spacing	10 - 12 cm
QTY/hole	1 - 2
Hole diam Ø	4 & 10 Holes

Price for each roller

R 160 Incl. VAT



White Radish

Plant Spacing	18 cm
Row Spacing	20 cm
QTY/hole	1 - 2
Hole diam Ø	5 & 6 Holes



Beets

Plant Spacing	20 - 25 cm
Row Spacing	45 - 55 cm
QTY/hole	1 - 2
Hole diam Ø	6.5 & 4 Holes



Turnips

Plant Spacing	25 - 30 cm
Row Spacing	50 - 65 cm
QTY/hole	1 - 2
Hole diam Ø	5.5 & 4 Holes



Lettuce

Plant Spacing	25 - 30 cm
Row Spacing	40 - 50 cm
QTY/hole	2 - 3
Hole diam Ø	5 & 4 Holes

Price for each roller

R 160 Incl. VAT



Iceberg Lettuce

Plant Spacing	30cm
Row Spacing	40 cm
QTY/hole	2 - 3
Hole diam Ø	5 & 4 Holes



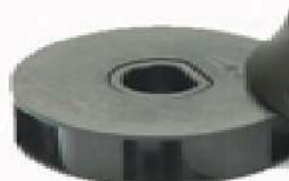
Broccoli

Plant Spacing	10 - 15 cm
Row Spacing	40 - 55 cm
QTY/hole	2 - 3
Hole diam Ø	3 & 6 Holes



Pumpkin

Plant Spacing	25 - 35 cm
Row Spacing	40 cm
QTY/hole	2 - 3
	4 Holes



Cucumber

Plant Spacing	20 - 25 cm
Row Spacing	30 cm
QTY/hole	3 - 5
	6 Holes

Price for each roller

R 160 Incl. VAT

Peas

Plant Spacing	10 - 15 cm
Row Spacing	45 - 60 cm
QTY/hole	1 - 2
Hole diam Ø	13.5 & 10 Holes

Crape Myrtle

Plant Spacing	10 - 15 cm
Row Spacing	15 - 25 cm
QTY/hole	3
Hole diam Ø	4 & 8 Holes

Atractylodes

Plant Spacing	8 - 10 cm
Row Spacing	20 - 35 cm
QTY/hole	3 - 5
Hole diam Ø	9.5 & 12 Holes

Sesame

Plant Spacing	20 cm
Row Spacing	33 cm
QTY/hole	2 - 3
Hole diam Ø	4 - 6 Holes



Price for each roller

R 160 Incl. VAT



Maca

Plant Spacing	10 - 20 cm
Row Spacing	30 cm
QTY/hole	1 - 2
Hole diam Ø	3.5 - 6 Holes



Sorghum

Plant Spacing	17 cm
Row Spacing	40 cm
QTY/hole	2 - 3
Hole diam Ø	4.5 - 6 Holes



Lespedeza

Plant Spacing	15 -20 cm
Row Spacing	45 - 60 cm
QTY/hole	2 -3
Hole diam Ø	5.5 - 6 Holes



Mulberry

Plant Spacing	3 - 5 cm
Row Spacing	40 - 50 cm
QTY/hole	2 -3
Hole diam Ø	4 - 30 Holes

Price for each roller

R 160 Incl. VAT



The Spore Kale

Plant Spacing	35 - 45cm
Row Spacing	30 cm
QTY/hole	1 - 2
Hole diam Ø	3.5 - 3 Holes



Parsnip

Plant Spacing	15 - 20 cm
Row Spacing	40 cm
QTY/hole	2 - 3
Hole diam Ø	5.5 - 4 Holes



Basil

Plant Spacing	5 - 15 cm
Row Spacing	45 - 60 cm
QTY/hole	2 - 3
Hole diam Ø	4.5 - 12 Holes



Platycodon Root

Plant Spacing	6 - 8 cm
Row Spacing	15 - 20 cm
QTY/hole	3 - 5
Hole diam Ø	4.5 - 12 Holes

Price for each roller

R 1360 Incl. VAT



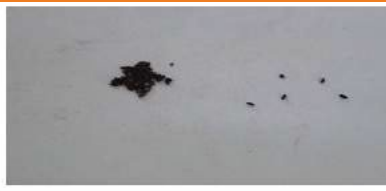
Broom Corn Millet

Plant Spacing	20cm
Row Spacing	40 - 50 cm
QTY/hole	3 - 5
Hole diam Ø	6.5 - 6 Holes



Foxtail Millet

Plant Spacing	3 - 5 cm
Row Spacing	35 - 40 cm
QTY/hole	2 - 3
Hole diam Ø	5 - 20 Holes



Fineleaf Schizonepeta Herb

Plant Spacing	15 - 20 cm
Row Spacing	25 cm
QTY/hole	3 - 5
Hole diam Ø	2 - 20 Holes



Grain Amaranth

Plant Spacing	15 25 cm
Row Spacing	40 - 50 cm
QTY/hole	2 - 3
Hole diam Ø	3.5 - 4 Holes

Price for each roller

R 160 Incl. VAT



Clover

Plant Spacing	1 - 2 cm
Row Spacing	8 - 15 cm
QTY/hole	3 - 5
Hole diam Ø	4.5 - 30 Holes



www.tillers4africa.co.za

Johannesburg

+27 60 876 6115